

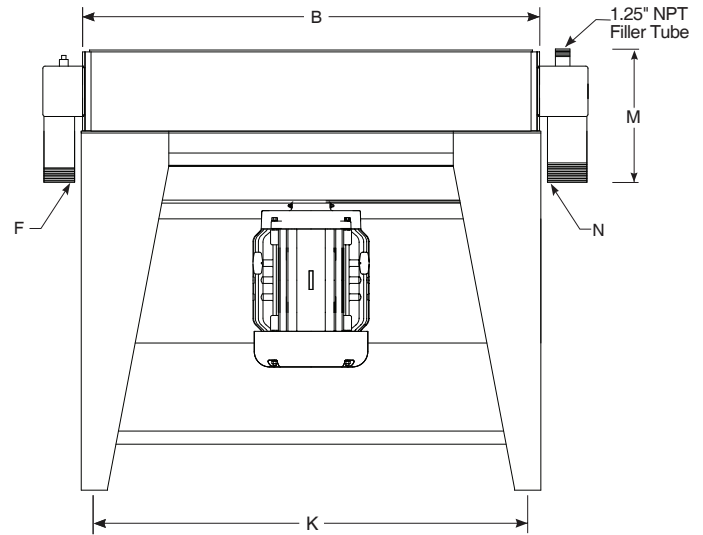
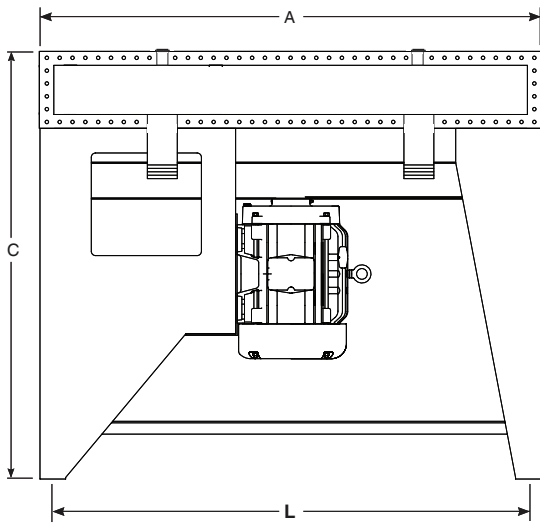
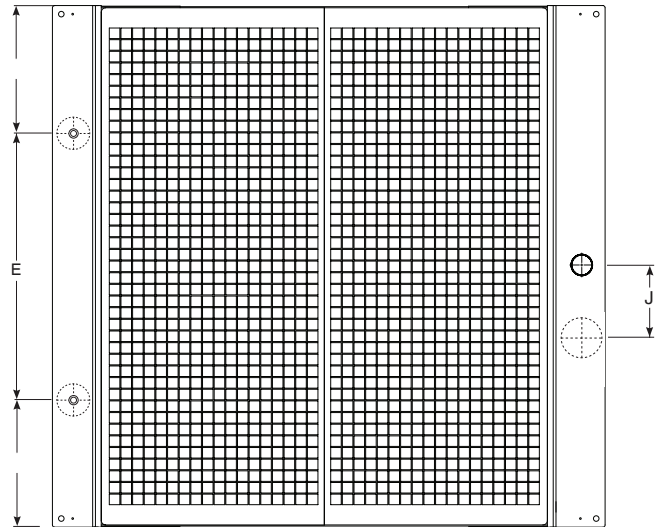


AIR COOLED

LIQUID COOLERS

- Severe duty construction with OSHA guard.
- Serviceable Core®.
- Thermal capacity to 1,400 hp (1,043 Kw).
- Operating temperature of 300°F at 200 PSI.
- Electric, hydraulic, or external drive.
- Optional: built-in bypass valve.
- Can be customized to fit any applications.
- Field changeable drive from electric to hydraulic.
- Cools: Fluid power systems, rock crushers, conveyors, shredders, lubrication equipment for paper machinery, gear drives, offshore drilling equipment, etc.

AOCSH Series *dimensions with electric / hydraulic drive*



AOCSH - 1005 through AOCSH - 4030

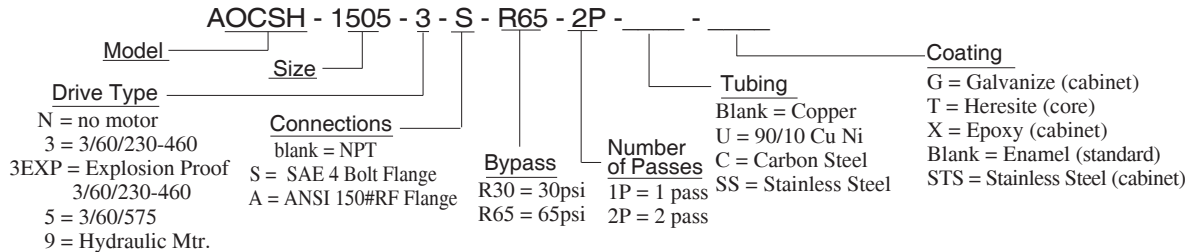
(F* and N*) are SAE code 61 four bolt flanges

DIMENSIONS (inches)																
Model	A	B	C	D	E	F NPT	F* SAE	G	H	J	K	L	M	N NPT	N* SAE	T
AOCSH-201 - *	26.00	22.75	38.50	6.00	6.00	1.25	1.25	11.00	1.38	7.00	13.25	19.61	9.00	1.50	1.50	18.00
AOCSH-303 - *	31.25	26.75	38.50	6.00	7.00	1.25	1.25	13.00	1.88	7.00	18.48	23.61	9.00	2.00	2.00	22.00
AOCSH-453 - *	35.00	32.25	40.88	6.00	8.00	1.50	1.50	15.75	1.88	7.00	22.23	29.13	9.00	2.00	2.00	28.00
AOCSH-603 - *	41.00	37.25	40.88	6.00	10.00	1.50	1.50	18.25	2.13	7.00	28.23	34.13	9.00	2.50	2.50	32.00
AOCSH-1005-*	46.25	44.25	42.75	6.00	10.50	2.00	2.00	21.75	3.50	8.00	33.48	41.13	13.50	3.00	3.00	36.00
AOCSH-1505-*	53.25	52.25	42.75	6.00	12.50	2.00	2.00	25.75	3.50	8.00	40.48	19.13	13.50	3.00	3.00	42.00
AOCSH-2010-*	62.25	58.75	80.00	9.00	15.00	3.00	3.00	29.00	4.50	8.00	49.48	55.61	15.50	4.00	4.00	48.00
AOCSH-2515-*	70.50	66.50	52.65	37.00	16.00	3.00	3.00	32.87	4.50	8.00	57.73	63.56	15.50	4.00	4.00	54.00
AOCSH-3120-*	76.50	68.75	52.65	40.00	17.00	3.00	3.00	34.00	4.50	8.00	63.76	65.61	15.50	4.00	4.00	60.00
AOCSH-3525-*	82.75	73.25	52.87	43.00	18.00	3.00	3.00	37.00	4.50	8.00	70.00	70.11	18.00	4.00	4.00	60.00
AOCSH-4030-*	88.78	79.25	52.87	46.00	20.00	3.00	3.00	40.00	4.50	8.00	76.00	76.13	18.00	4.00	4.00	60.00

*Represents the options for motor drive.

1. The AOCSH series construction materials are identical to AOCS series, (See page 189)
2. AOCSH electric motors and hydraulic motors are identical to AOCS Series (See page 193, 195)
3. Will provide a detailed drawing of the unit upon receiving an order
4. The overall height of the heat exchanger (C dimension) can change to meet any application

Example of a model:



COMMON DATA

Model	Air Flow		Sound Level dB(A) @ 13ft	Liquid Volume		Weight Electric		Weight Hydraulic		Serviceable Core™
	CFM	m³/s		gal.	cm³	lb	kg	lb	kg	
AOCSH-201 -*	3000	1.41	77	1.7	6435	200	91	185	84	Yes
AOCSH-303 - *	4380	2.07	82	3.8	14383	310	141	260	118	Yes
AOCSH-453 - *	5920	2.79	78	4.8	18168	490	222	410	186	Yes
AOCSH-603 - *	8750	4.13	80	6.1	23089	580	263	490	222	Yes
AOCSH-1005-*	12650	5.97	84	7.7	29145	690	313	575	261	Yes
AOCSH-1505-*	16150	7.65	87	10.4	39364	910	413	1025	465	Yes
AOCSH-2010-*	23350	11.73	92	22.8	86298	1280	580	1062	482	Yes
AOCSH-2515-*	32000	15.00	95	27.5	104088	1610	730	1320	598	Yes
AOCSH-3120-*	39000	18.40	99	31.9	120742	1810	821	1483	673	Yes
AOCSH-3525-*	46000	21.71	99	47.0	177895	1980	898	1622	736	Yes
AOCSH-4030-*	54000	25.48	99	47.0	185466	2150	975	1762	799	Yes

Accessories for Air / Liquid Application

For detailed information and part number see Page 274

Electrical Temperature controller with Bulb Well Assembly (for Air / Liquid Coolers)

Part Number	Description
310-4011	TC-511 with 6-Foot Capillary Tube & Bulb Well
310-4002	TC-511 with 20-Foot Capillary Tube & Bulb Well
310-2025	Replacement Bulb Well TC-511



“3-Way” Thermostatic Valve

For detailed information and model selection see page 275

